

Data subject to change without prior notice  
Edition 10/2022 © 2022 JMG Cranes S.p.A. All rights reserved  
Rev. 2 - 10/22



## LIGE by JMG Cranes S.p.A.

Sales & Service Office

Via Bergamo, 142

26100 Cremona - Italy

t +39 0372 1786738

Production Plant

Via Zuccherificio 2

29010 Sarmato (PC) - Italy

t +39 0523 8486

e info@jmgcranes.com



[www.jmgcranes.com](http://www.jmgcranes.com)

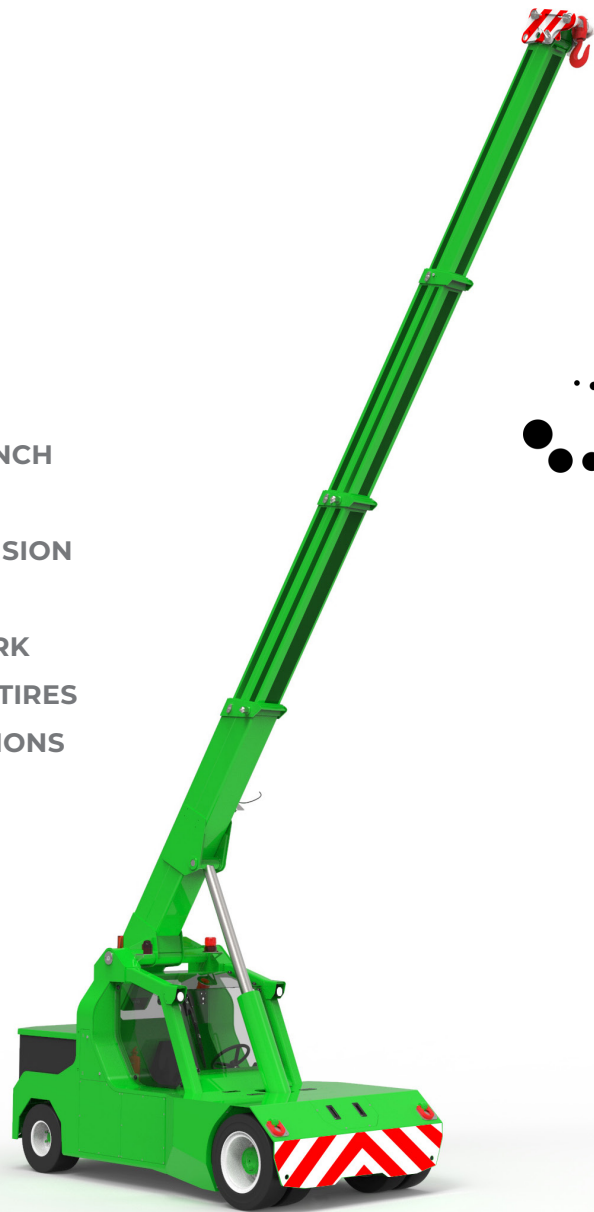


## ELECTRIC PICK & CARRY CRANES

**L90 (metric)**  
Max Capacity 9.000 kg

**LIGE**  
SINCE 1945 By JMG

WIDE AND ERGONOMIC CABIN  
FRONT WHEELS DRIVE WITH COUNTER ROTATION  
COMPACTNESS AND AGILITY  
REAR STEERING



**Optionals:**

- HYDRAULIC WINCH
- MANUAL JIB
- MANUAL EXTENSION
- HYDRAULIC JIB
- HYDRAULIC FORK
- NON-MARKING TIRES
- ATEX CONVERSIONS



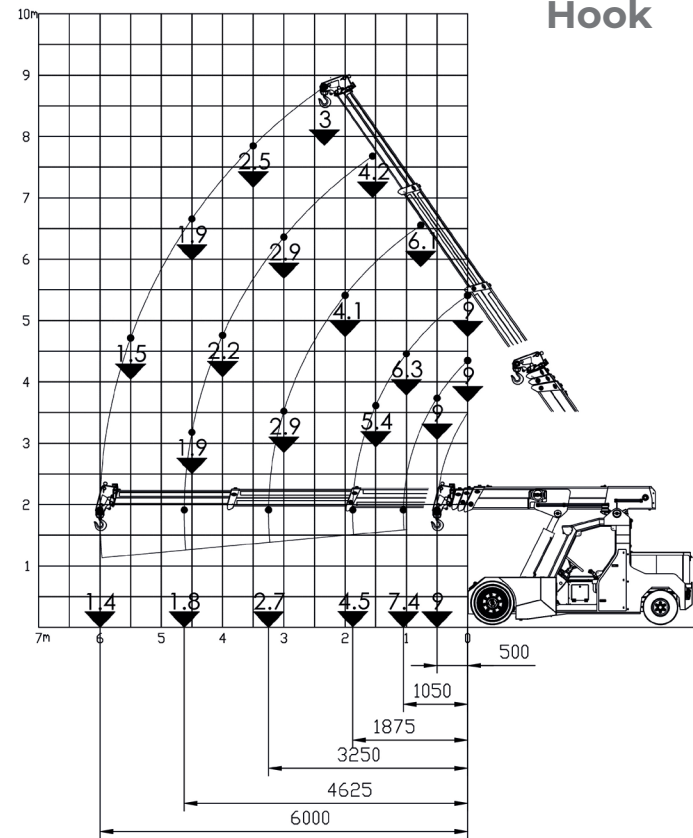
**Technical features**

Max Capacity kg	9,000
Dimensions mm	3665x1800x2300

Front-wheels drive. N°2 electric motors AC 7.5 kW 80V. Insulation class H	<b>L.M.L.</b> Electronic safe load indicator and tilting moment limiter
Total Kg. 9.500	Service brake: hydraulic with foot control. Parking and emergency brake: hydraulic with automatic control.
80 V - 640 Ah 8 working hours	Self-supporting steel structure bent and welded
Front nr. 4 superelastic 250-15" Rear nr. 2 superelastic 23x10-12"	+55°/-17°
Rear Steering angle -90°/+90°	Motor driven pump 16 kW - 80 V AC, Insulation class H



**Load charts**



**EU Standards CE**

	UNI ISO 4301-1: A1
	2006/42 CE-2014/30 UE-2014/35 UE- 2000/14 and subsequent modifications
	EN 13000:2014 ANSI/ASME B30.5-2011 and subsequent modifications



**Dimensions**

