

Data subject to change without prior notice
Edition 10/2022 © 2022 JMG Cranes S.p.A. All rights reserved
Rev. 2 - 10/22



Electric Pick & Carry Cranes

JMG Cranes S.p.A.

Sales & Service Office

Via Bergamo, 142

26100 Cremona - Italy

t +39 0372 1786738

Production Plant

Via Zuccherificio 2

29010 Sarmato (PC) - Italy

t +39 0523 8486

e info@jmgcranes.com



MC 250S (metric)

Max Capacity 25,000 kg

www.jmgcranes.com

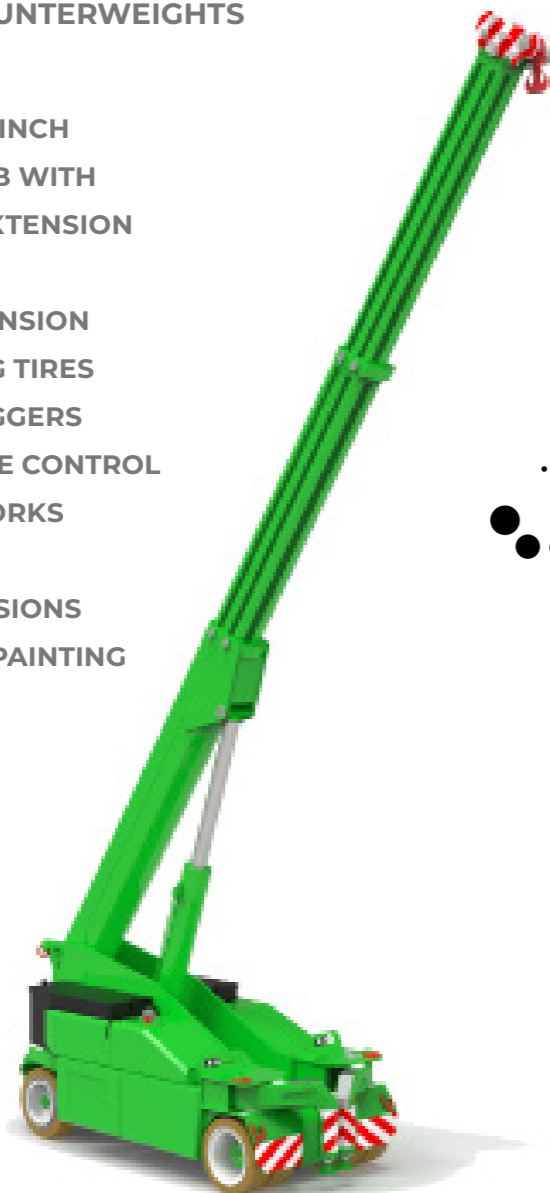


MC 250S

RADIO REMOTE CONTROLLED
 PROPORTIONAL TELESCOPIC BOOM
 FRONT-WHEELS DRIVE WITH COUNTER ROTATION
 180° REAR STEERING
 REMOVABLE COUNTERWEIGHTS

Options :

- HYDRAULIC WINCH
- HYDRAULIC JIB WITH HYDRAULIC EXTENSION
- MANUAL JIB
- MANUAL EXTENSION
- NON-MARKING TIRES
- FRONT OUTRIGGERS
- RADIO REMOTE CONTROL
- HYDRAULIC FORKS
- MAN BASKET
- ATEX CONVERSIONS
- CUSTOMIZED PAINTING

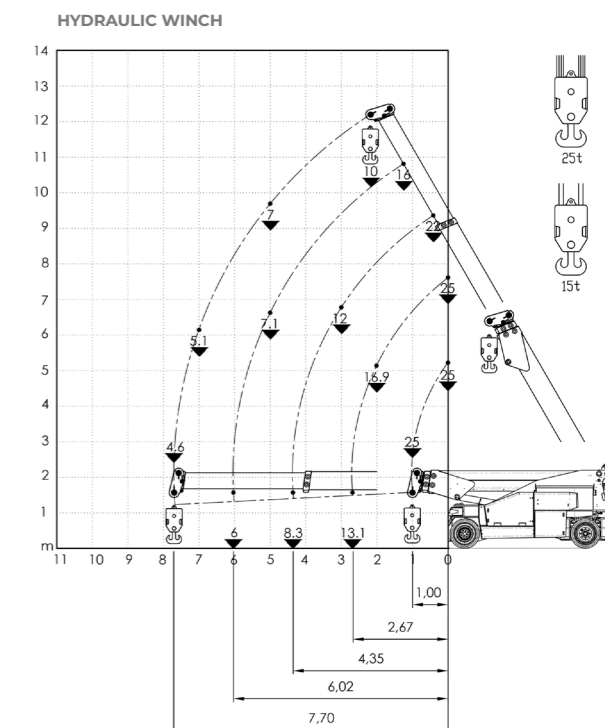
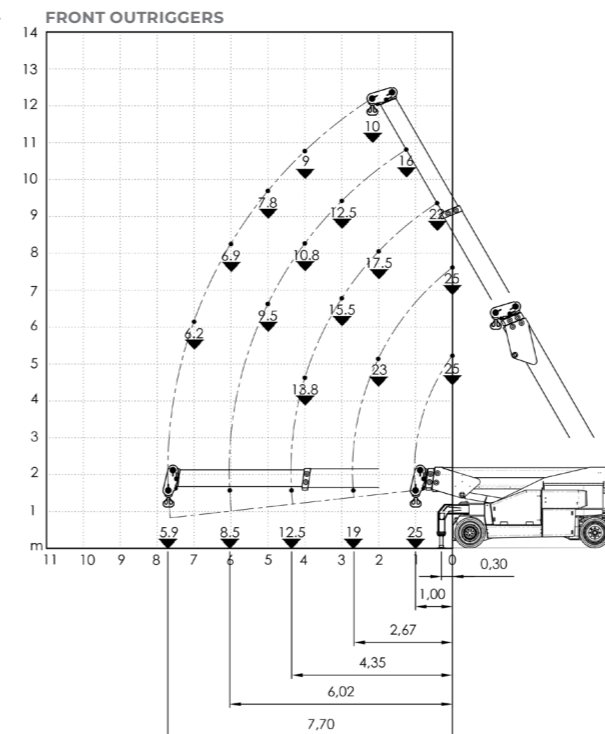
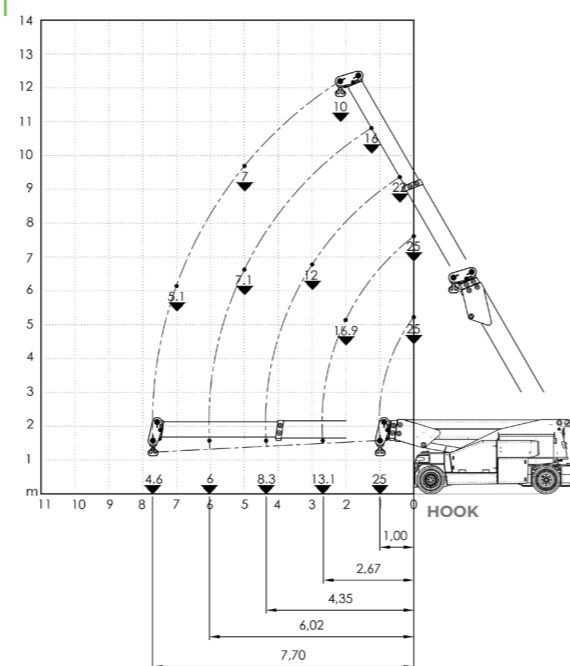


Technical features

Max Capacity kg	25,000
Dimensions mm	4770X2150X2200

	Front-wheels drive. 2 electric motors AC 12 kW 96V Insulation class H	LMI	Electronic safe load indicator and tilting moment limiter
	Total Kg. 28,250 Removable counterweights Kg. 6,220		Hydraulically foot controlled service brake on all wheels, hydraulically automatic or button controlled parking brake on front wheels
	96 V - 1125 Ah 8 working hours		Fabricated from preformed and welded quality steel plate
	Front nr. 4 superelastic 355/50-20" Rear nr. 2 superelastic 355/50-20"		+60°/-7°
	Rear Steering angle -90°/+90°		Motor driven pump 1x16 kW - 96 V AC.

Load charts



EU Standards CE

	UNI ISO 4301-1: A1
	2006/42 CE-2014/30 UE-2014/35 UE- 2000/14 e and subsequent modifications
	EN 13000:2014 ANSI/ASME B30.5-2011 and subsequent modifications

Dimensions

