

Data subject to change without prior notice  
Edition 10/2022 © 2022 JMG Cranes S.p.A. All rights reserved  
Rev. 2 - 10/22



## Electric Pick & Carry Cranes

### JMG Cranes S.p.A.

Sales & Service Office

Via Bergamo, 142

26100 Cremona - Italy

t +39 0372 1786738

Production Plant

Via Zuccherificio 2

29010 Sarmato (PC) - Italy

t +39 0523 8486

e [info@jmgcranes.com](mailto:info@jmgcranes.com)

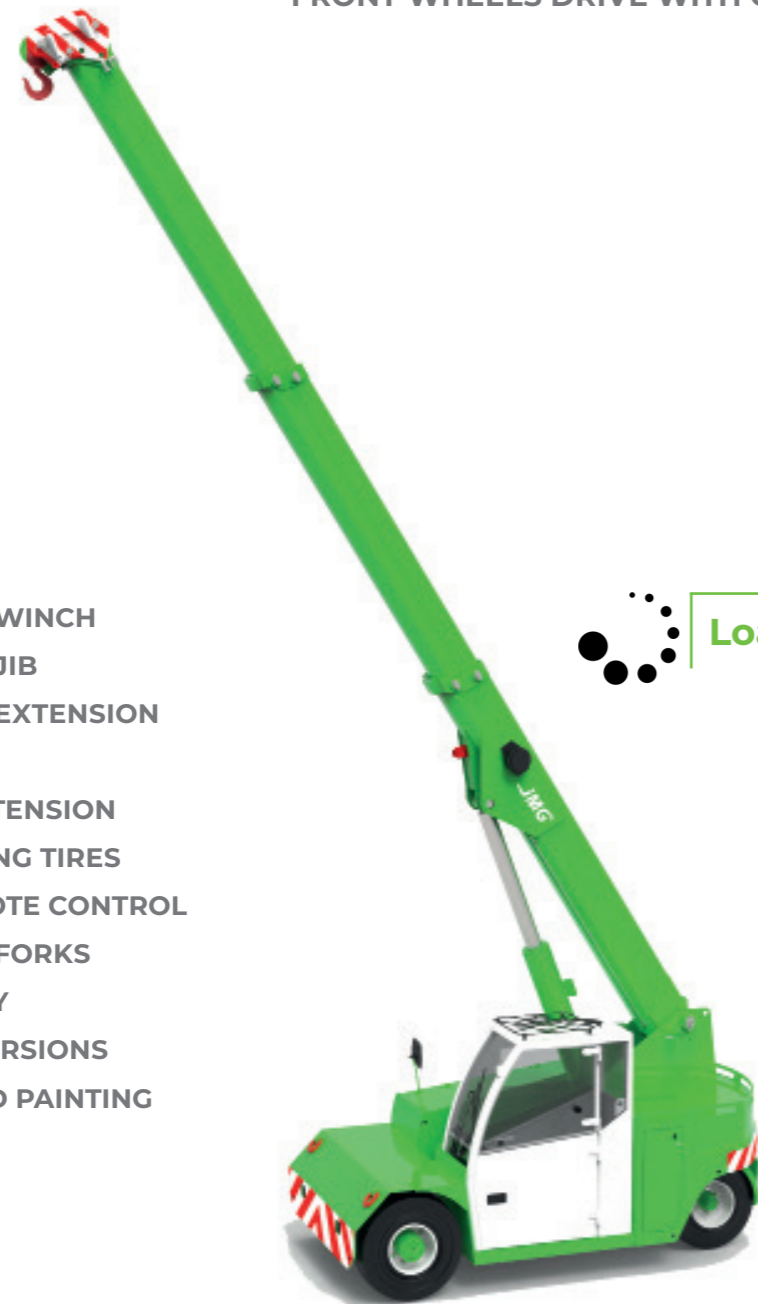


**MC 85 (metric)**  
Max Capacity 8,500 kg

[www.jmgcranes.com](http://www.jmgcranes.com)

**JMG**<sup>®</sup>  
movetosolution

## TELESCOPIC BOOM FRONT-WHEELS DRIVE WITH COUNTER ROTATION



### Options :

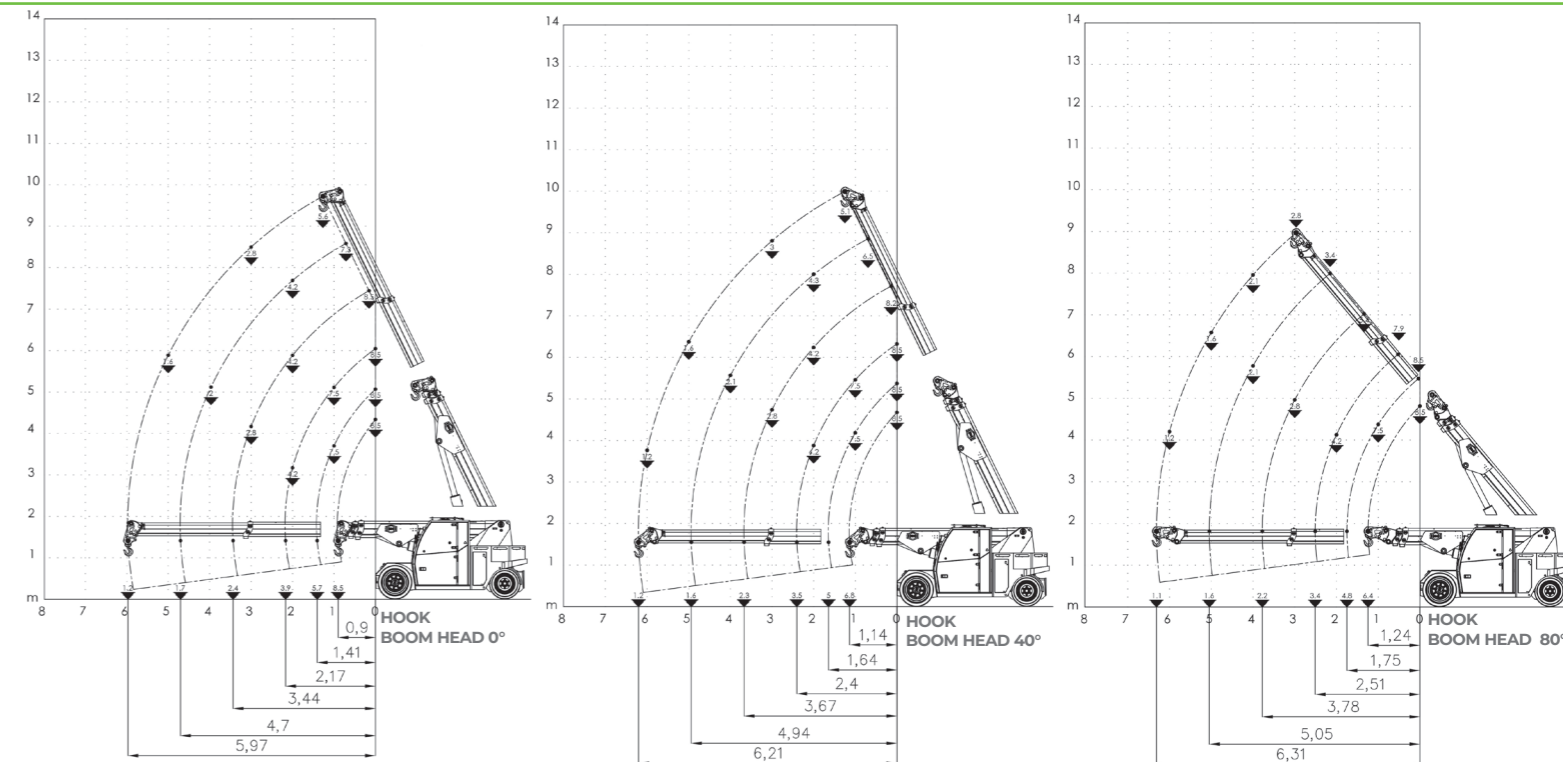
- HYDRAULIC WINCH
- HYDRAULIC JIB
- HYDRAULIC EXTENSION
- MANUAL JIB
- MANUAL EXTENSION
- NON-MARKING TIRES
- RADIO REMOTE CONTROL
- HYDRAULIC FORKS
- MAN BASKEY
- ATEX CONVERSIONS
- CUSTOMIZED PAINTING

## Technical features

Max Capacity kg	8,500
Dimension mm	3655x1700x1900

Front-wheels drive. 2 electric motors AC 7,5 kW 72V Insulation class H	Electronic safe load indicator and tilting moment limiter
Total Kg. 9,750	Hydraulically foot controlled service brake on all wheels, hydraulically automatic or button controlled parking brake on front wheels
72 V - 620 Ah 8 working hours	Fabricated from preformed and welded quality steel plate
Front nr. 2 superelastic 355x65/15" Rear nr. 2 superelastic 7.50/15"	+64°/-8
Rear Steering angle -90°/+90°	Motor driven pump 1x16 kW-72 V AC

## Load charts



## EU Standards CE

	UNI ISO 4301-1: A1
	2006/42 CE-2014/30 UE-2014/35 UE- 2000/14 and subsequent modifications
	EN 13000:2014 ANSI/ASME B30.5-2011 and subsequent modifications

## Dimensions

