

JIMG[®]



MC210

Metric

Maximum Capacity
21.000 kg

MC210



Outriggers

Placed on the front, the outriggers can have two defined positions when opened.



Compact

The rear counterweight can be removed to shorten the machine footprint by more than 400mm.



Boom head

The hydraulic head allows more control and precision on the work in progress.



Directives. Regulations



UNI ISO

4301-1:A1



UE / CE

2006/42 CE

2014/30 UE

2014/35 UE

2000/14 CE

and any subsequent changes.



OTHER

EN 13000:2014

ANSI/ASME B30.5-2021

and any subsequent changes.

Technical Details

Maximum capacity 21.000 kg

Total weight 23.000 kg

Counterweights 2.500 kg Z1
Removables 1.500 kg Z2
1.500 kg Z3
750 kg + 750kg Z4

Battery working time up to 8 hr
Lead 96V 1085Ah

Motor 45Kw AC
variable cc pump

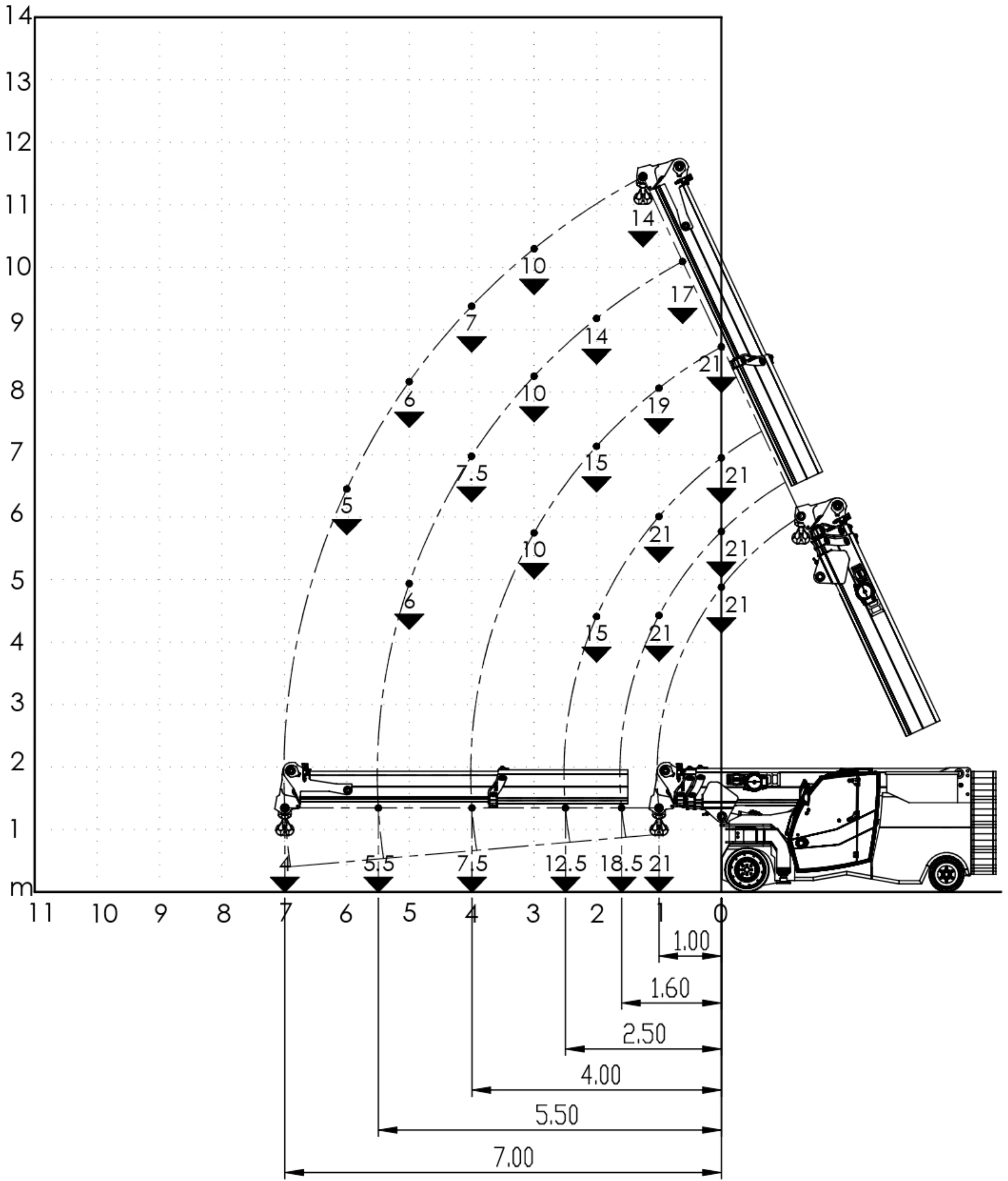
Traction front axle
2x 12Kw AC

PLC electronic tilting moment
limiter

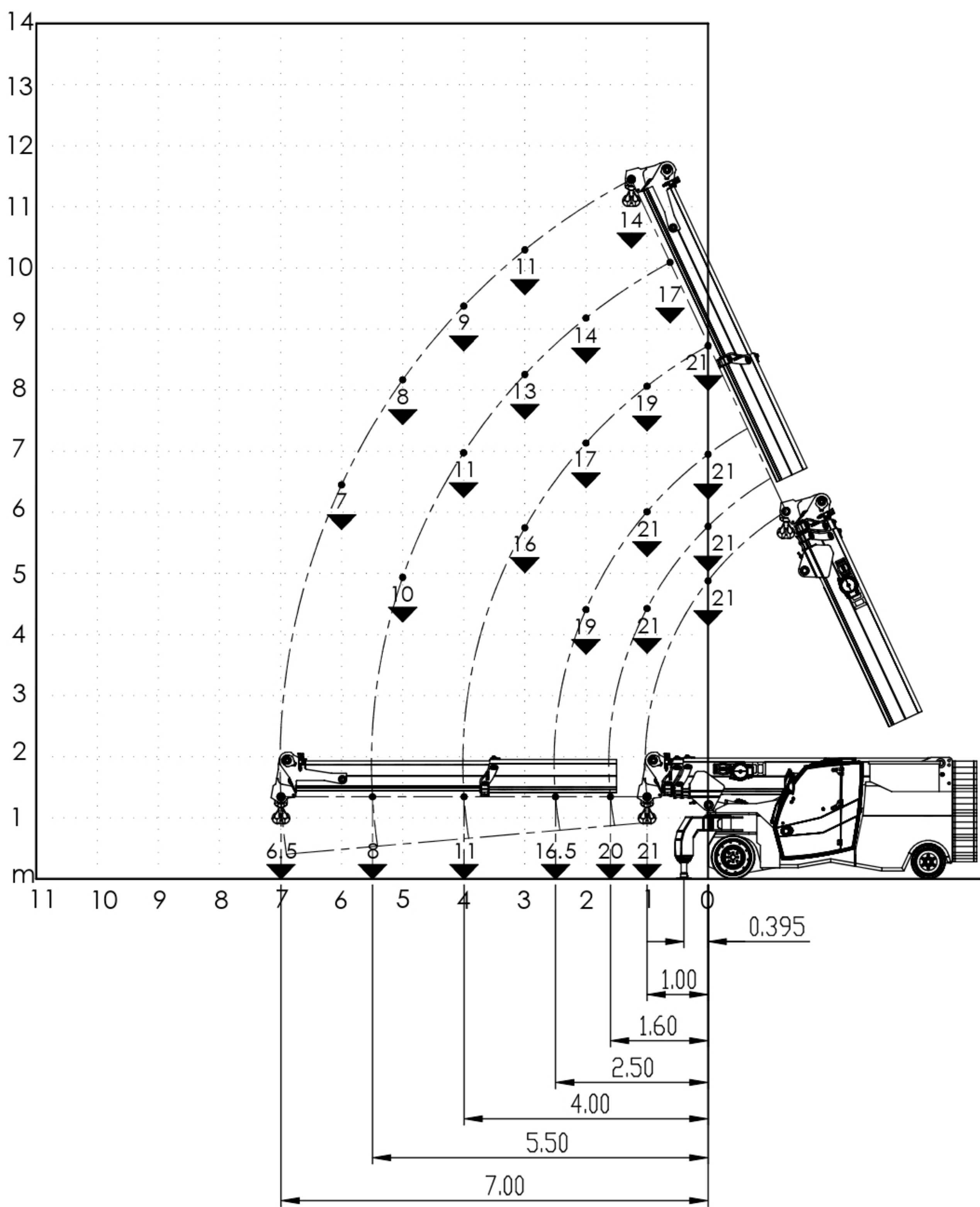
Hydraulic brakes automatic braking
system

Inclination da 0° a 80° head
da -5° a 65° boom

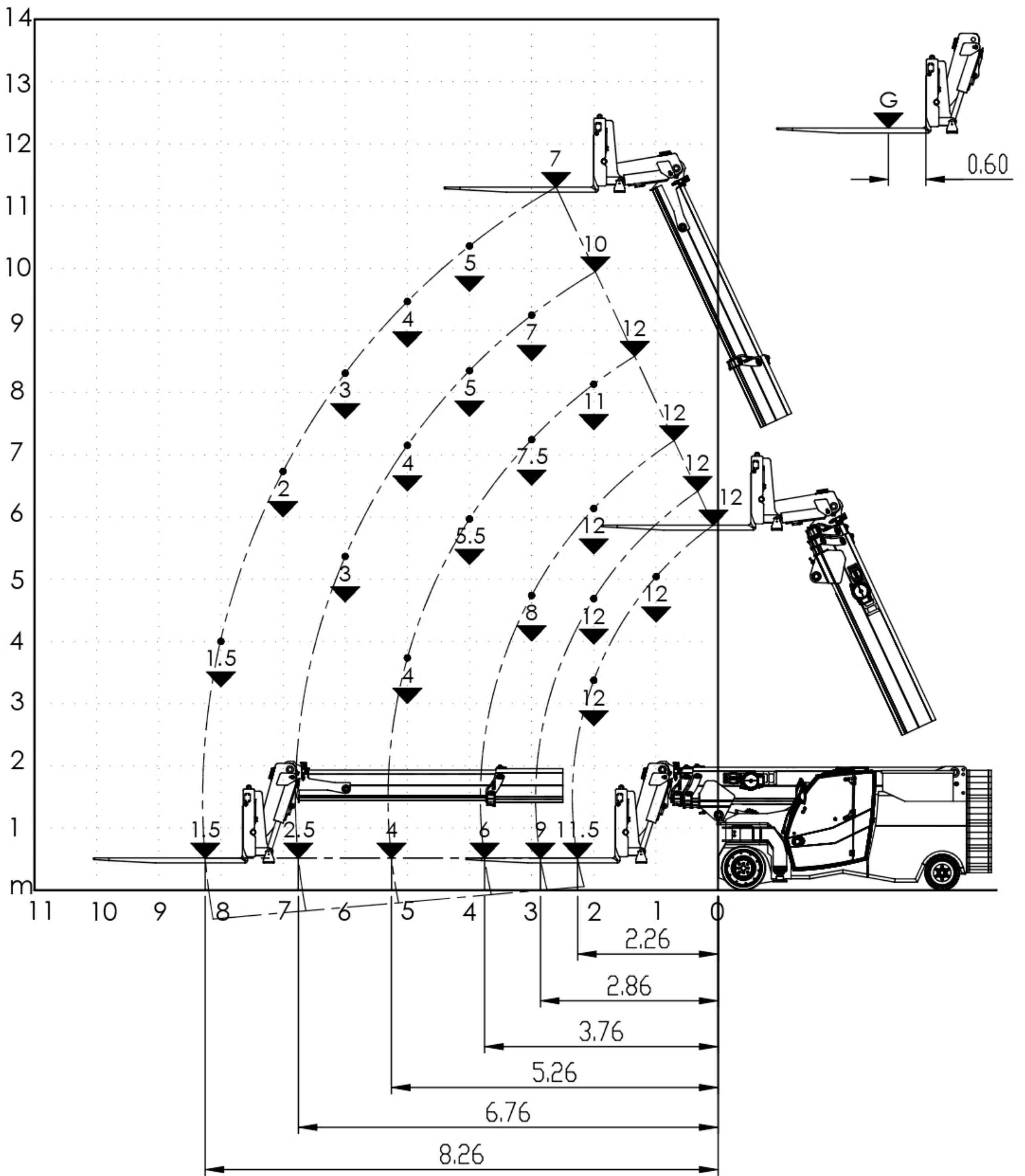
NO OUTRIGGERS



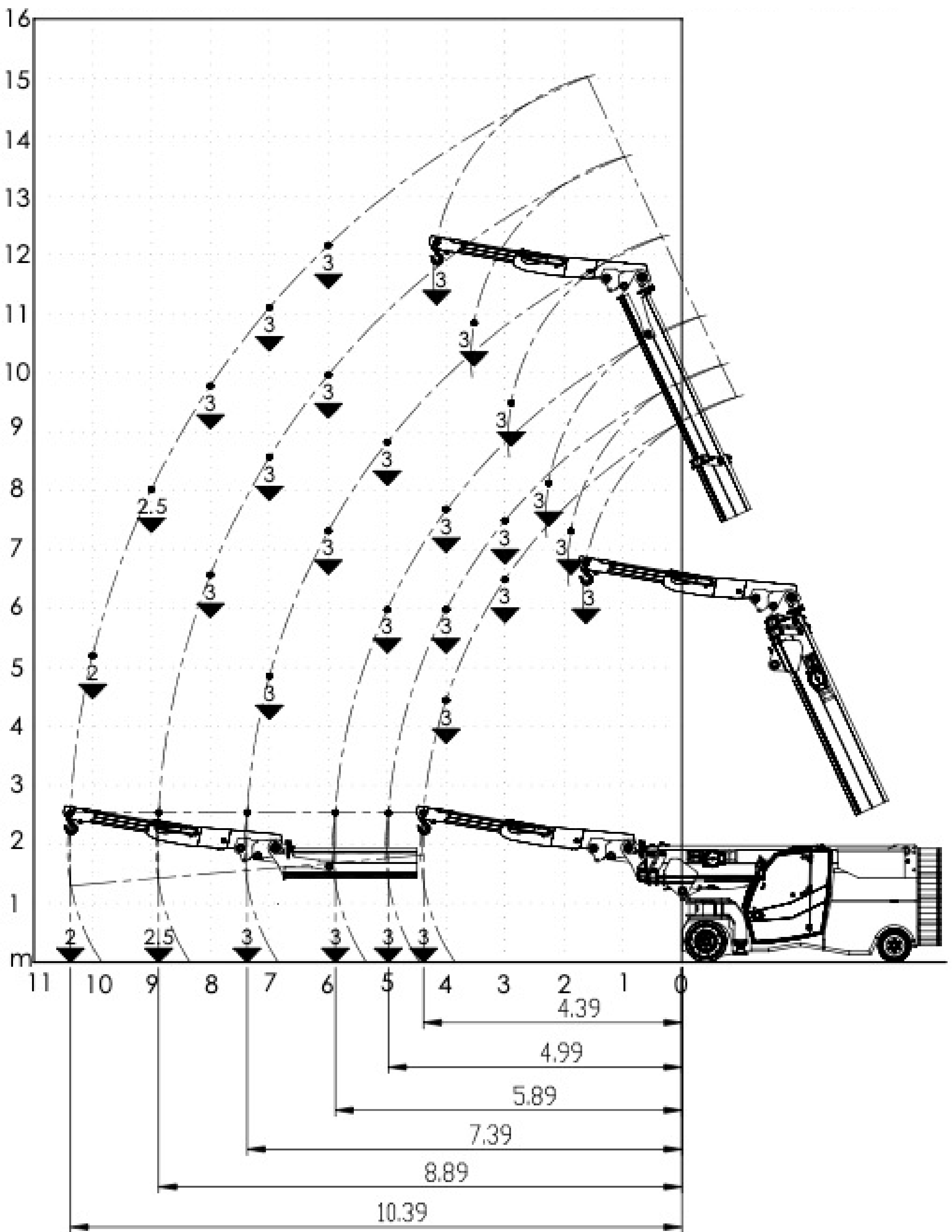
OUTRIGGERS OPEN

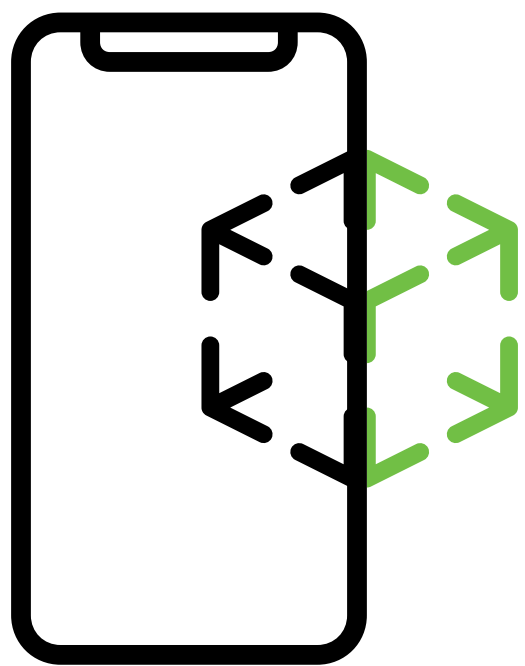
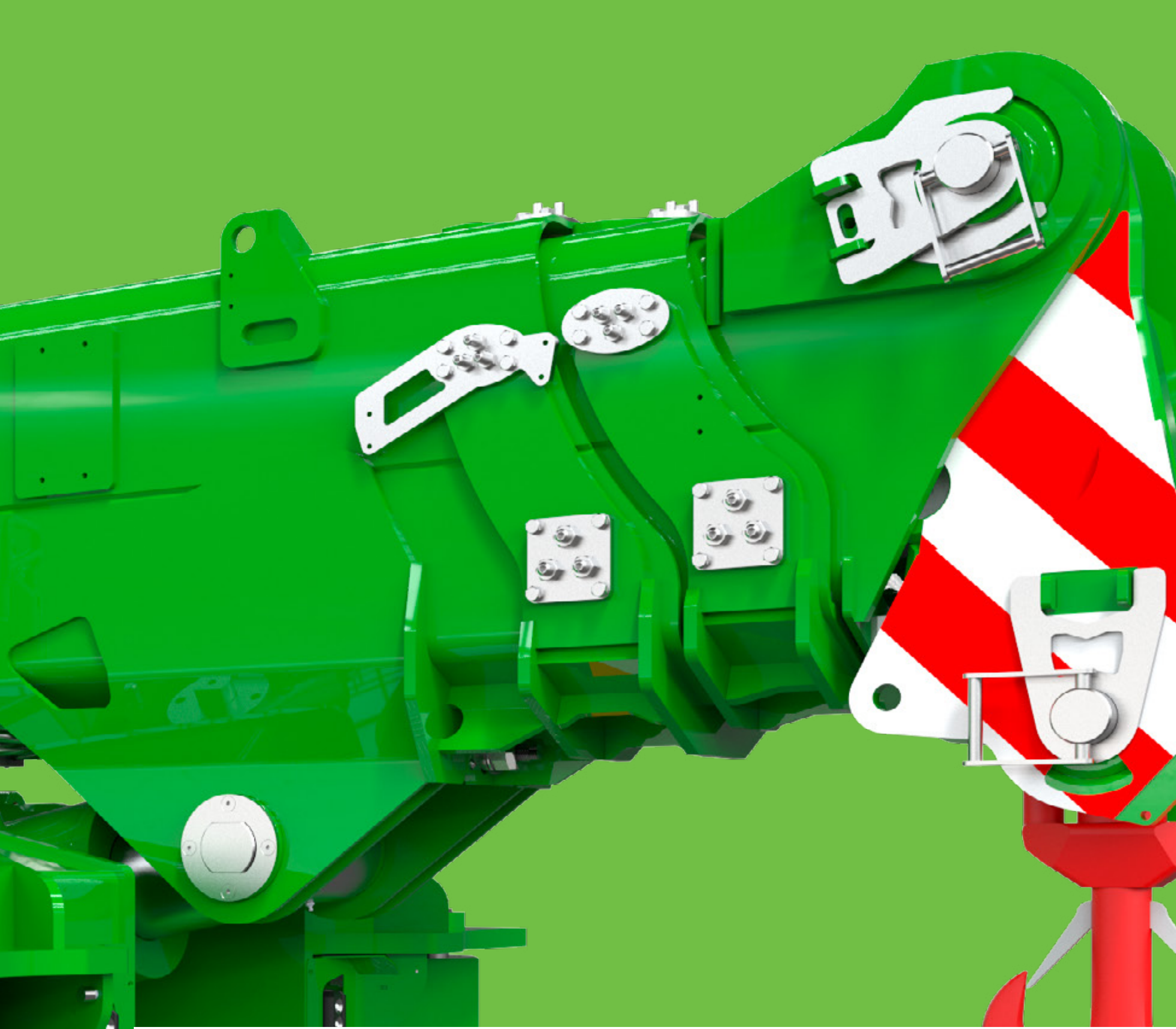


FORKS



HYDRAULIC JIB





Augmented reality.

Display the dimensions, accessories, and key features directly at the crane's point of use.

By pressing the button below, you can utilize augmented reality to position the **JMG MC210** crane in space using the iPhone's native camera

AR available only on iPhone

Optionals

01

Hydraulic winch

02

Hydraulic Jib

03

Mechanical jib

04

Lithium battery

05

Hydraulic fork

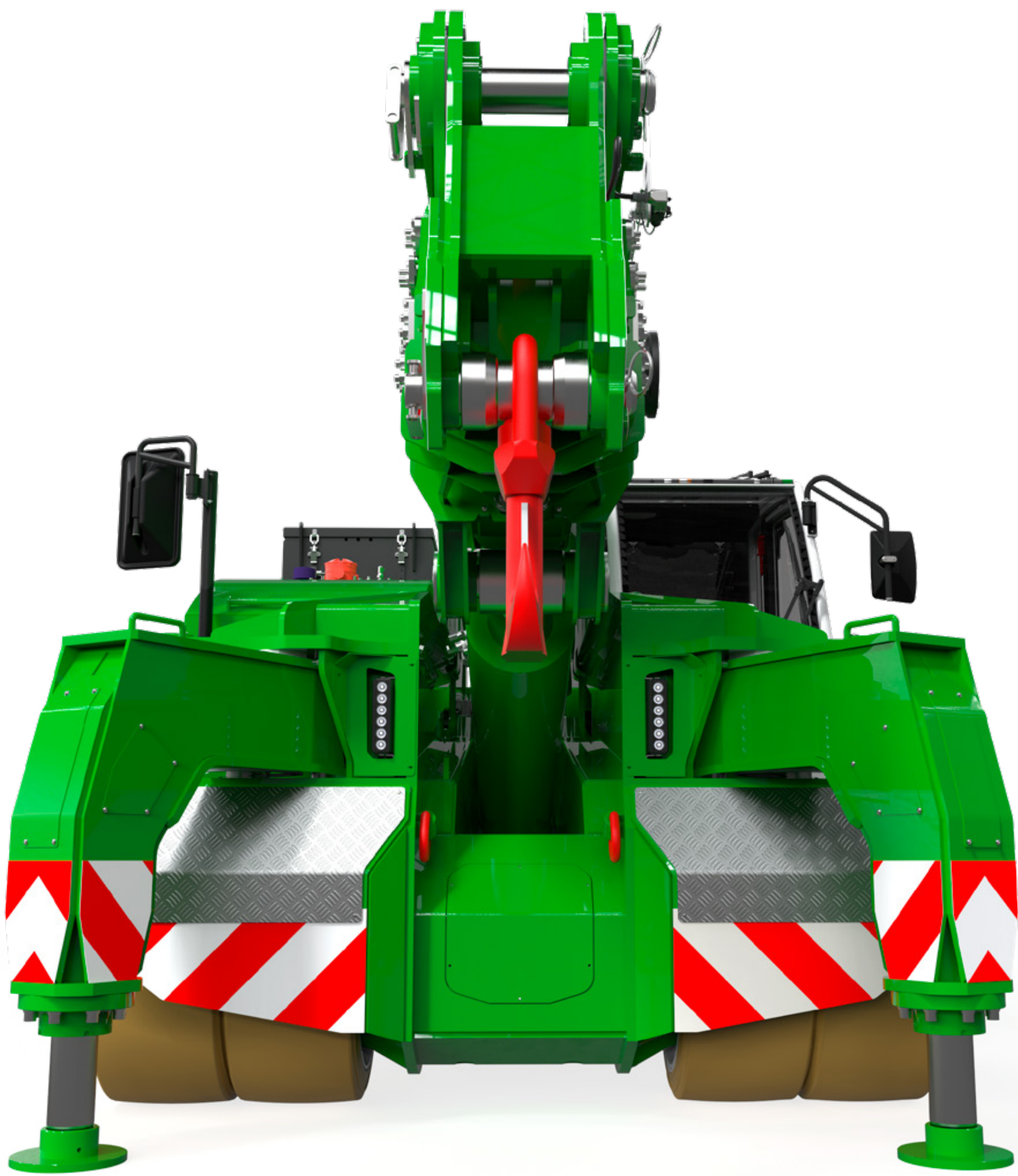
06

Custom color

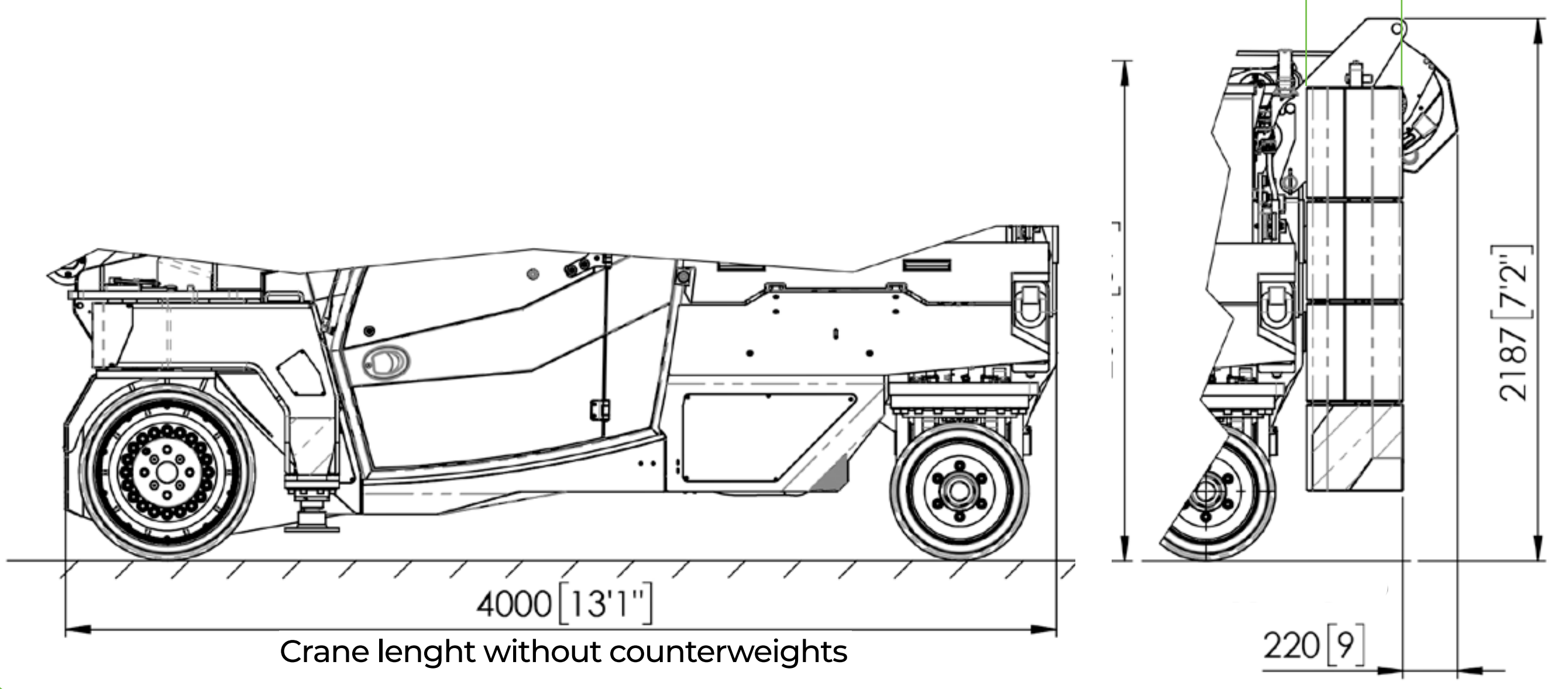
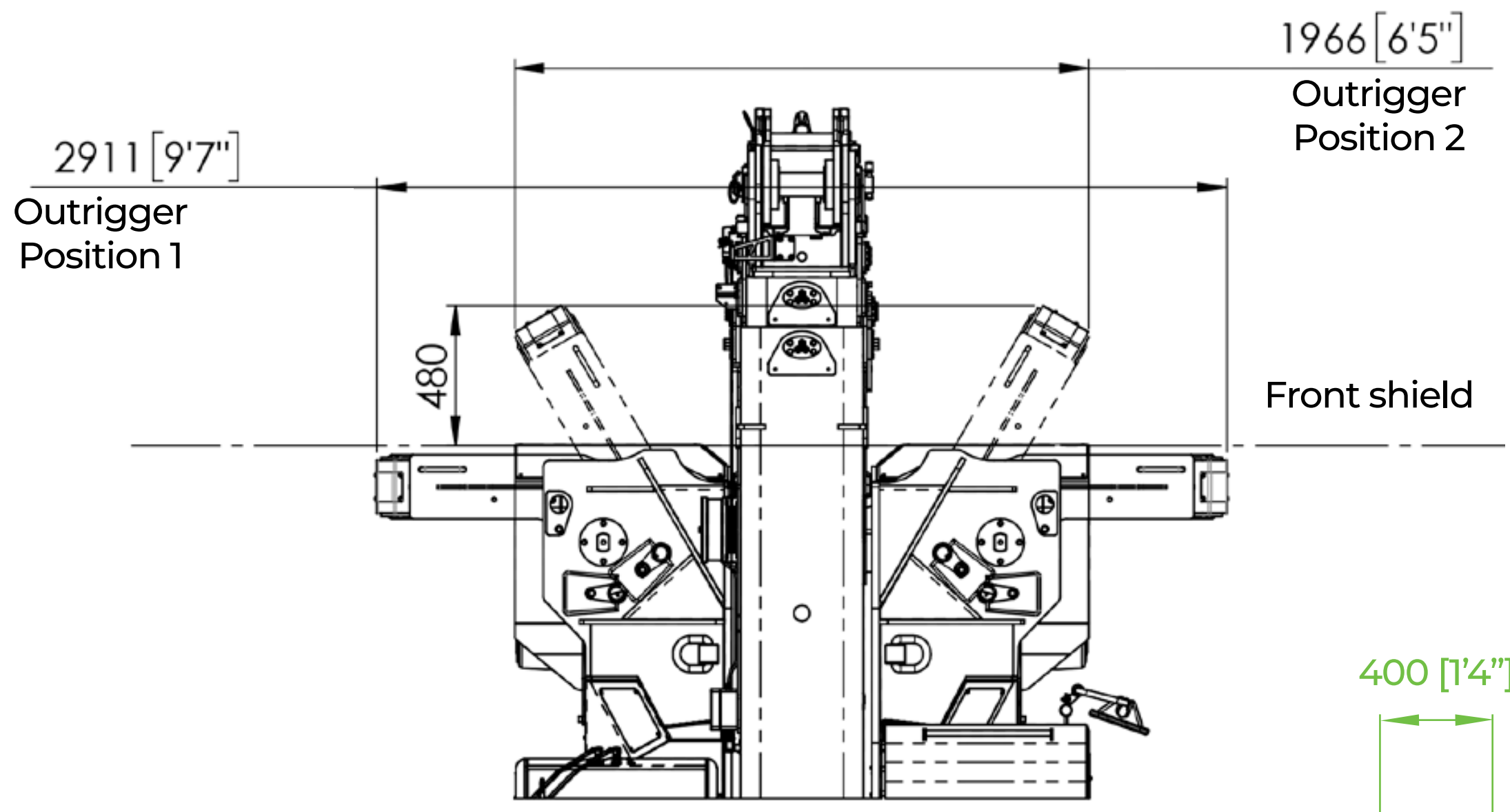
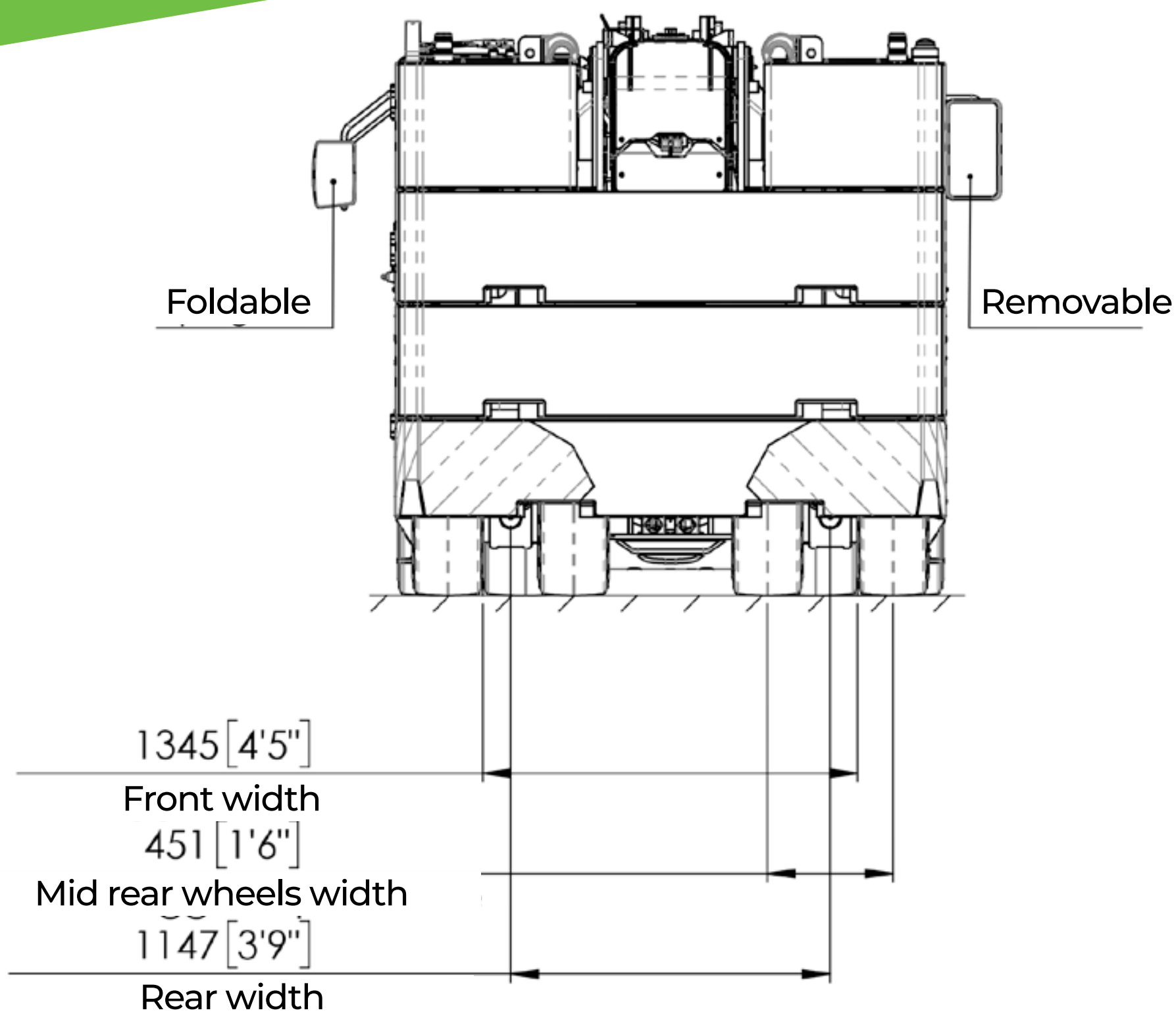


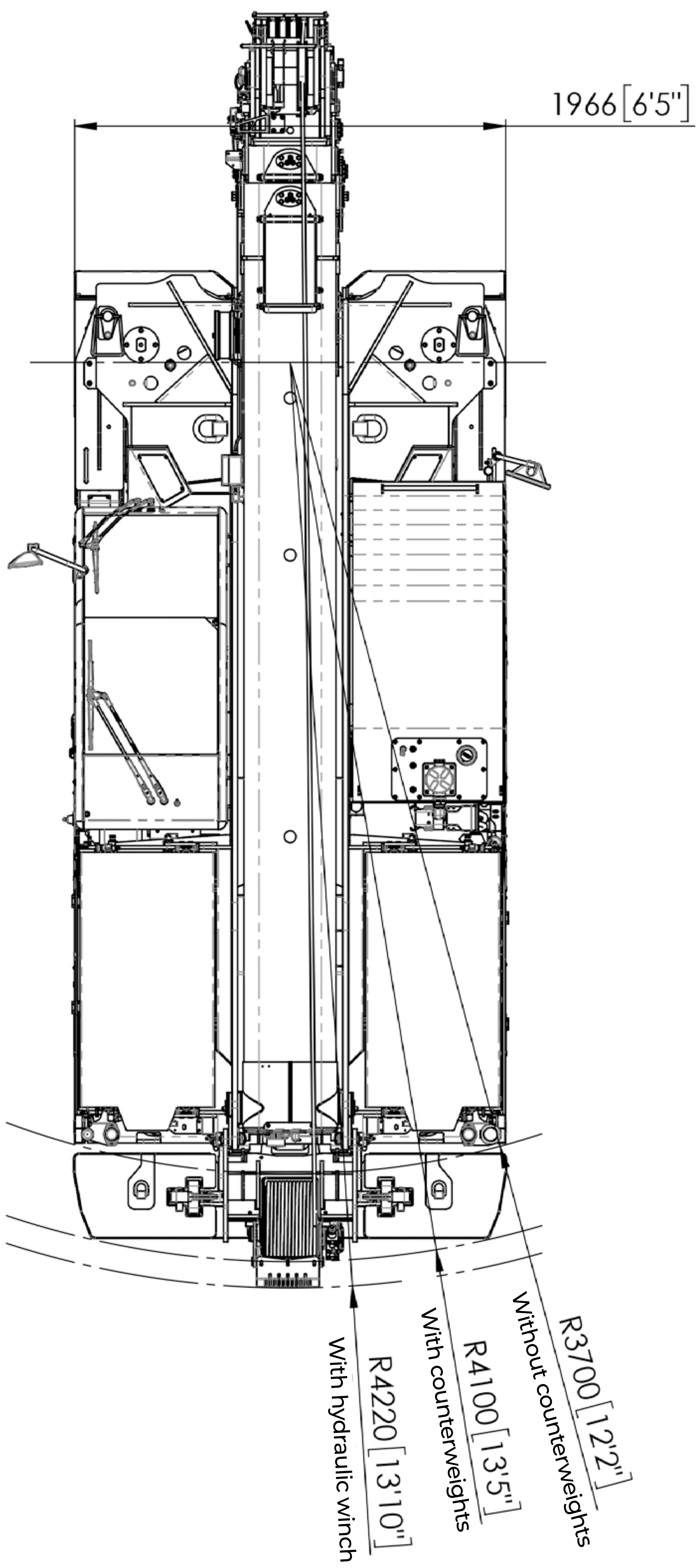
Dimension

MC210



4400mm - 1960mm - 2020mm





JMG[®]

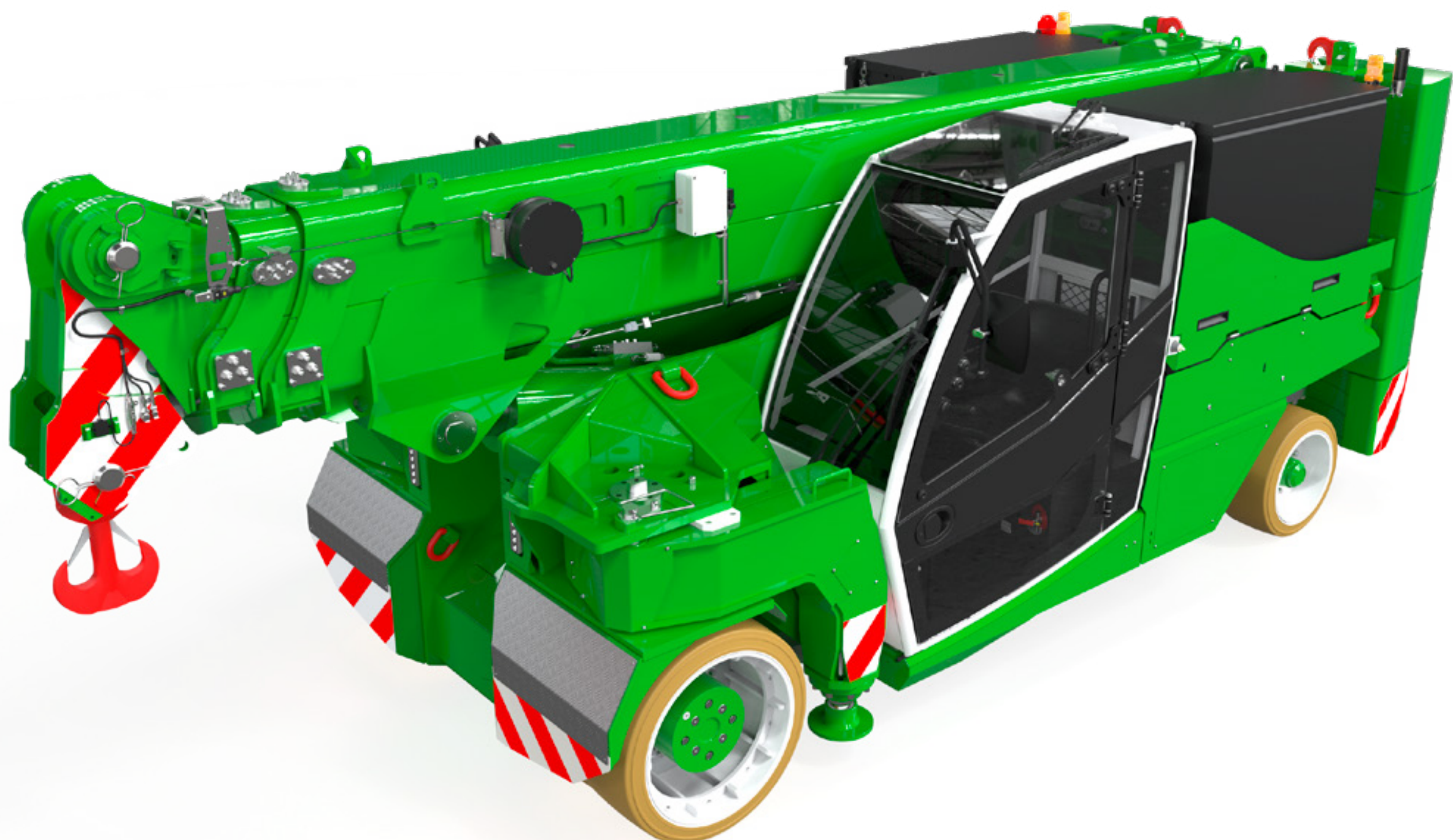
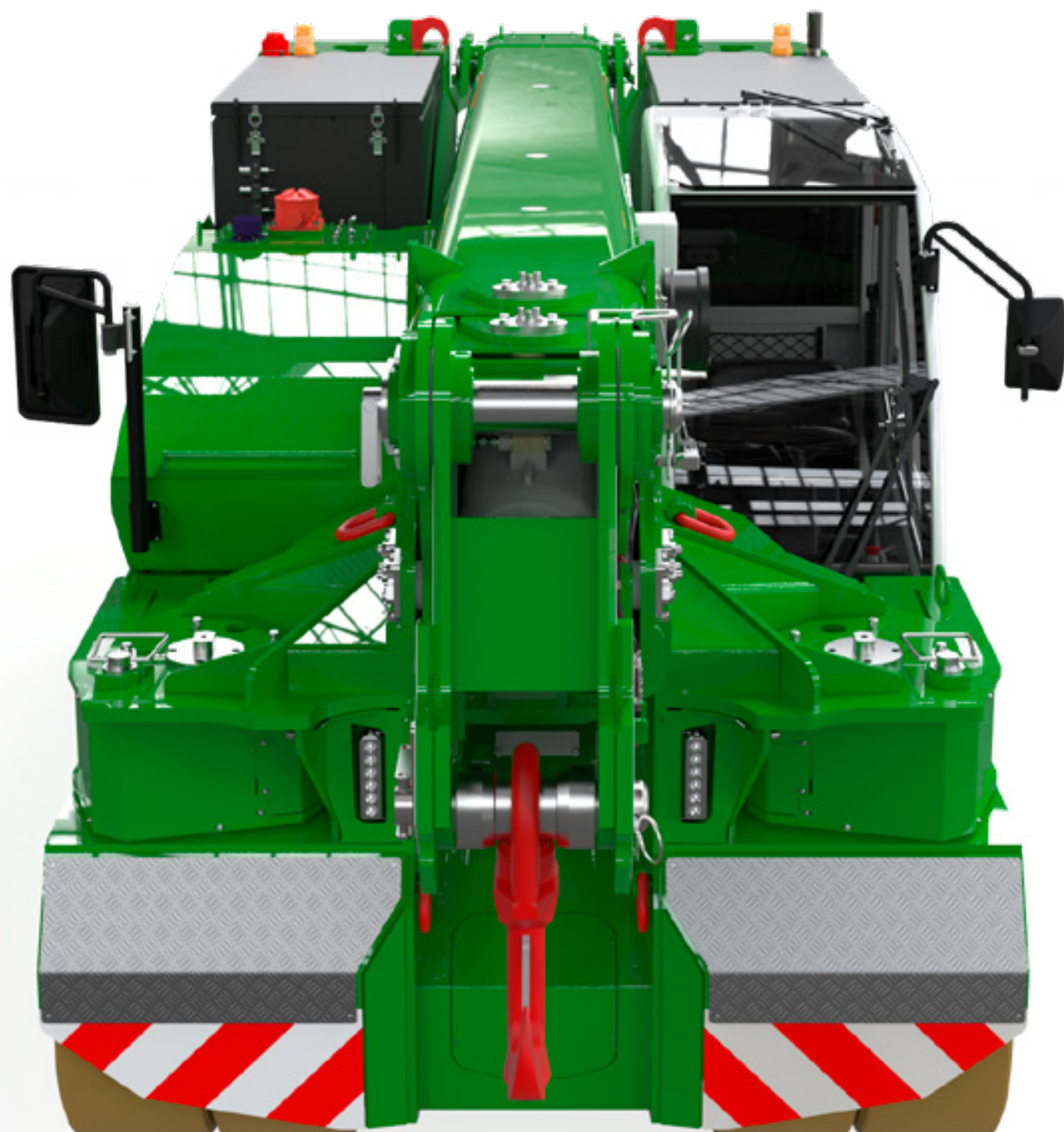
—
MC210





MC210 render





JMG Cranes S.p.A

Business headquarters:

Via Bergamo 142
26100 CREMONA (CR)
Italy

Production facility:

Via Zuccherificio 2
29010 SARMATO (PC)
Italy

+39 05238486

www.jmgcranes.com

info@jmgcranes.com