

JIMG[®]



MC50000TE

Metric

Maximum Capacity
50000 kg/m

MC5000TE



Outriggers

Located on the front and rear, opening the stabilizers allows them to work in any configuration.



Working time

In addition to the 100% electric working autonomy provided by the battery, the crane can operate non-stop when connected to the power outlet.



Worksites

With its tracks design, it can perform tasks in environments that would stop other pick and carry cranes.



Optionals

01

Hydraulic winch

02

Hydraulic Jib

03

Anti-trace track

04

Man basket

05

Custom color

06

Explosion-proof Atex



Directives. Regulations.



UNI ISO

4301-1:A1



UE / CE

2006/42 CE

2014/30 UE

2014/35 UE

2000/14 CE

and any subsequent changes.



OTHER

EN 13000:2014

EN 12999:2020

ANSI/ASME B30.5-2021

EN 12999:2020

and any subsequent changes.

Technical Details.

Maximum capacity

50.000 kg/m

Total weight

20.000 kg

Outriggers

variable-position

Max support base

6300mm

6300mm ^x

Battery

lithium

working time up to 8 hours

96V 1120Ah

Pump

35Kw AC

variable cc pump

Traction motor

Front axle

2x 20Kw AC

PLC

Limitatore del
momento ribaltante

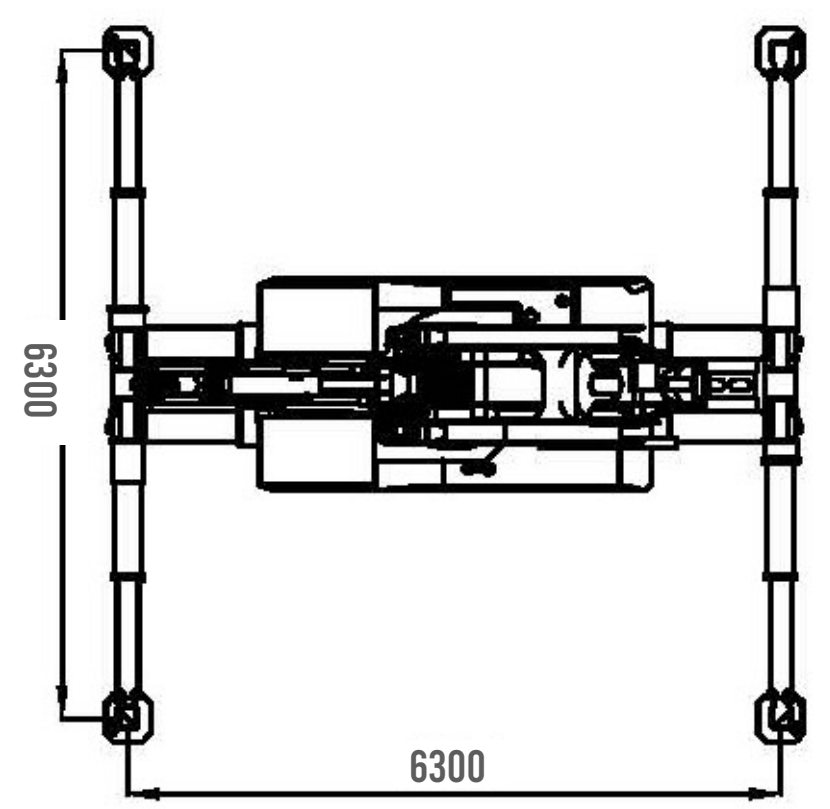
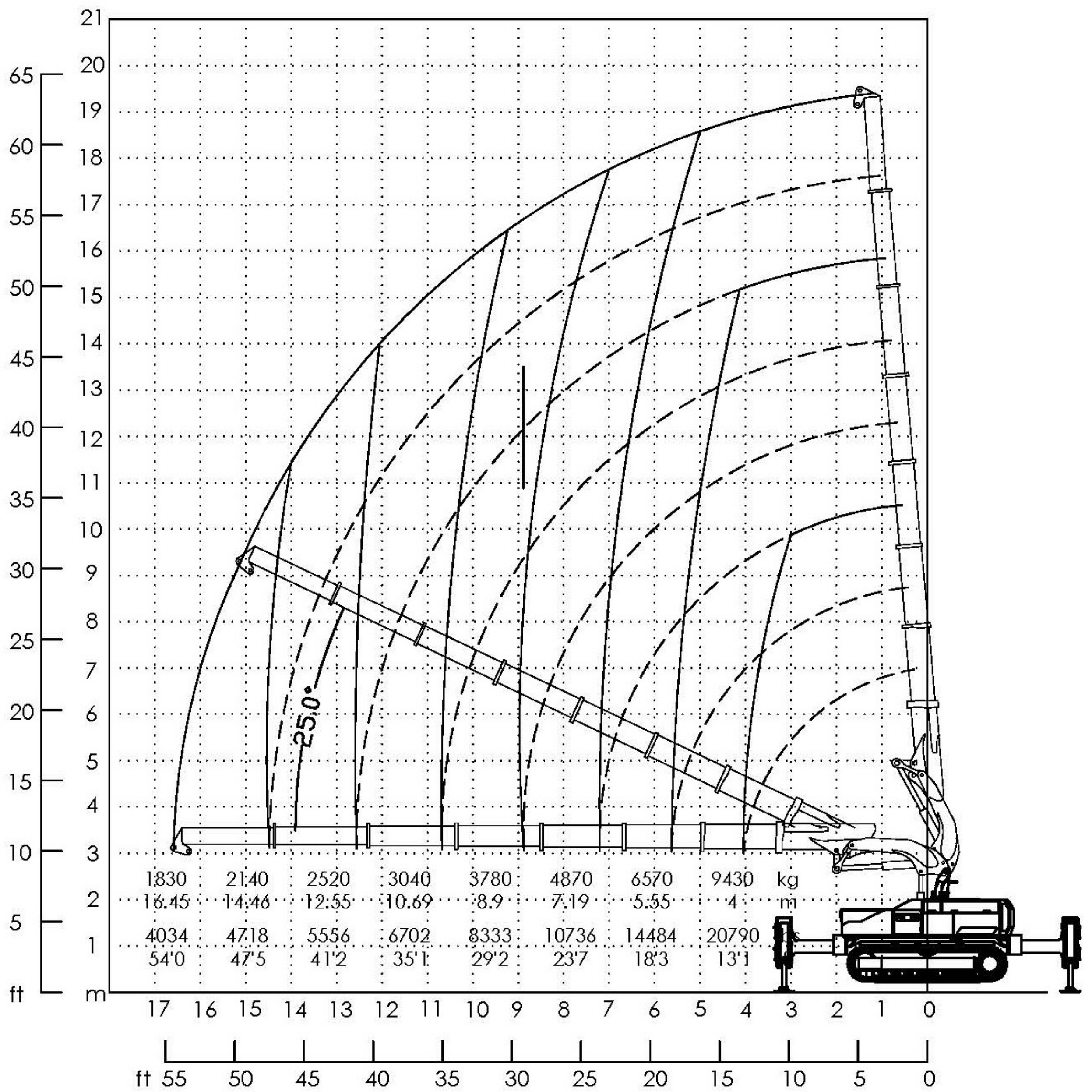
Tracks

Automatic breaking
system

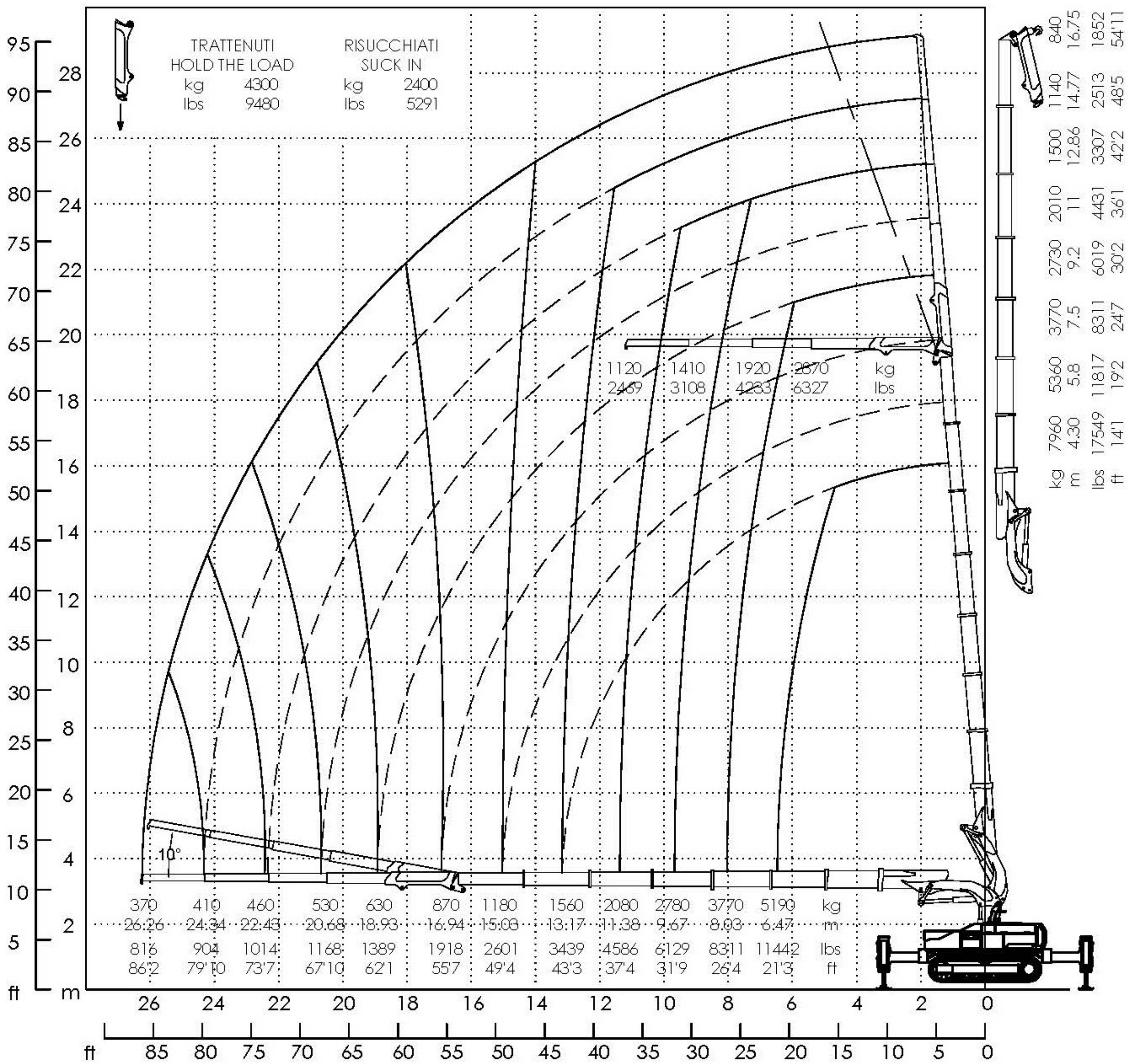
Boom angle

da -45°a +85° boom

OUTRIGGERS OPEN

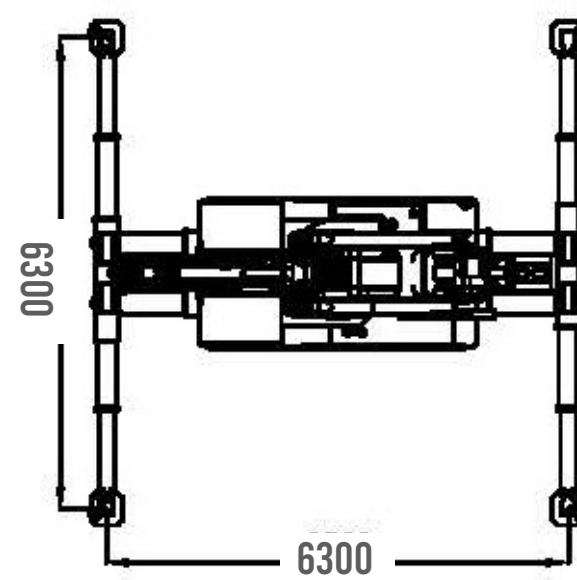


IDRAULIC JIB

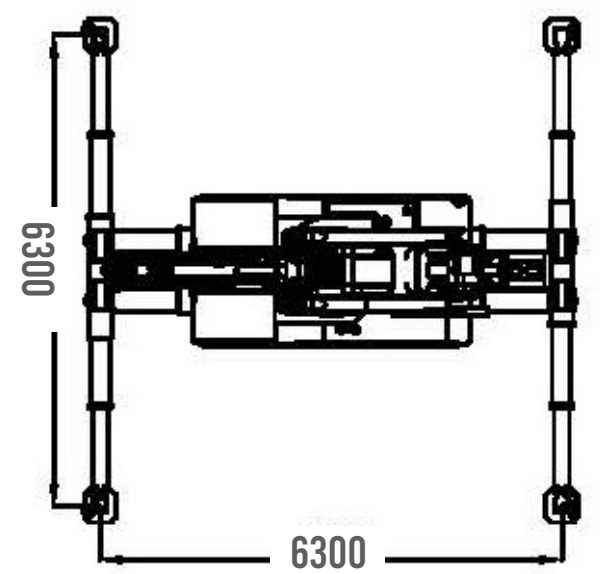
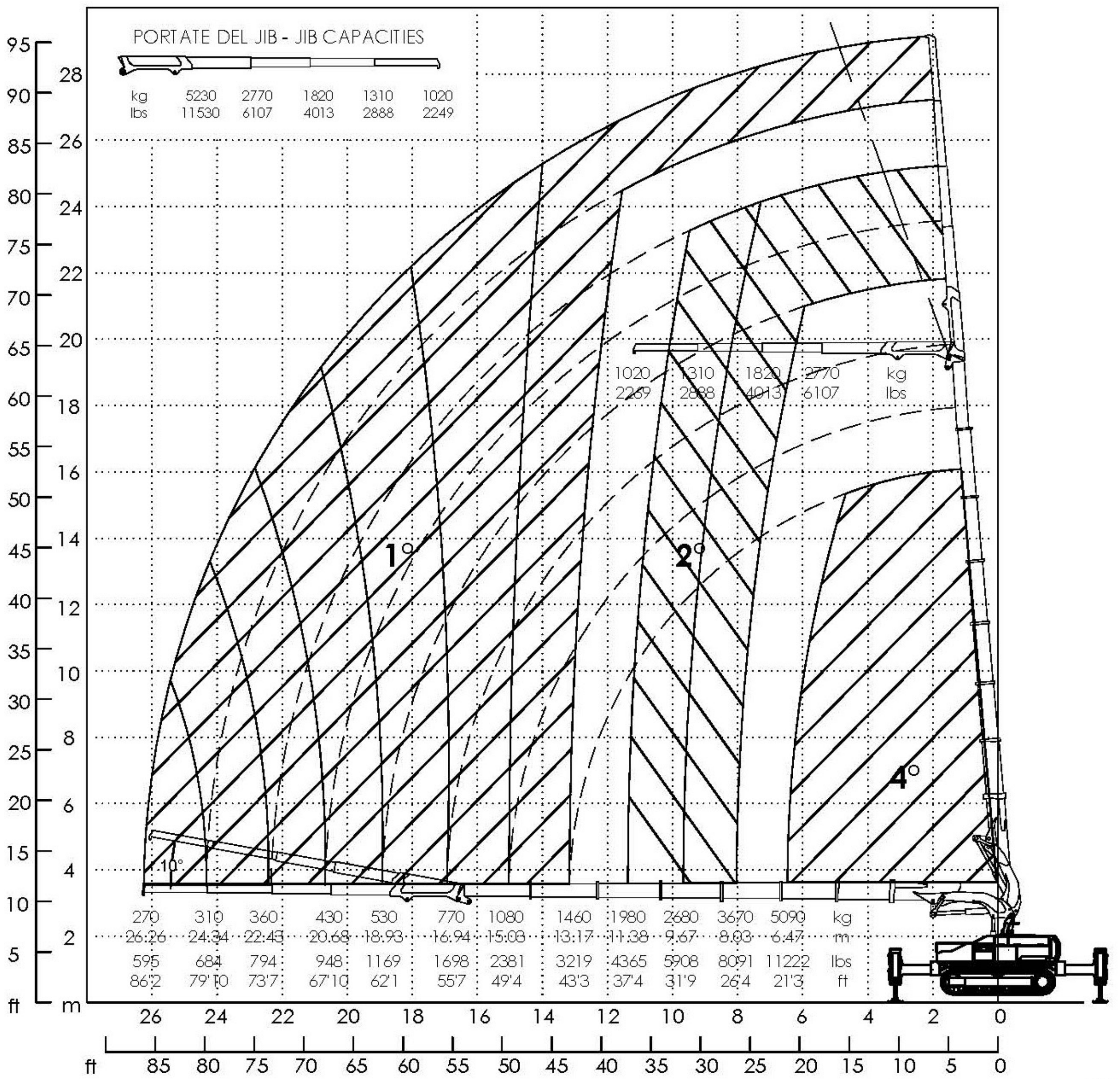


PORTATE DEL JIB - JIB CAPACITIES

kg	5330	2870	1920	1410	1120
lbs	11751	6327	4233	3108	2469



WINCH + JIB

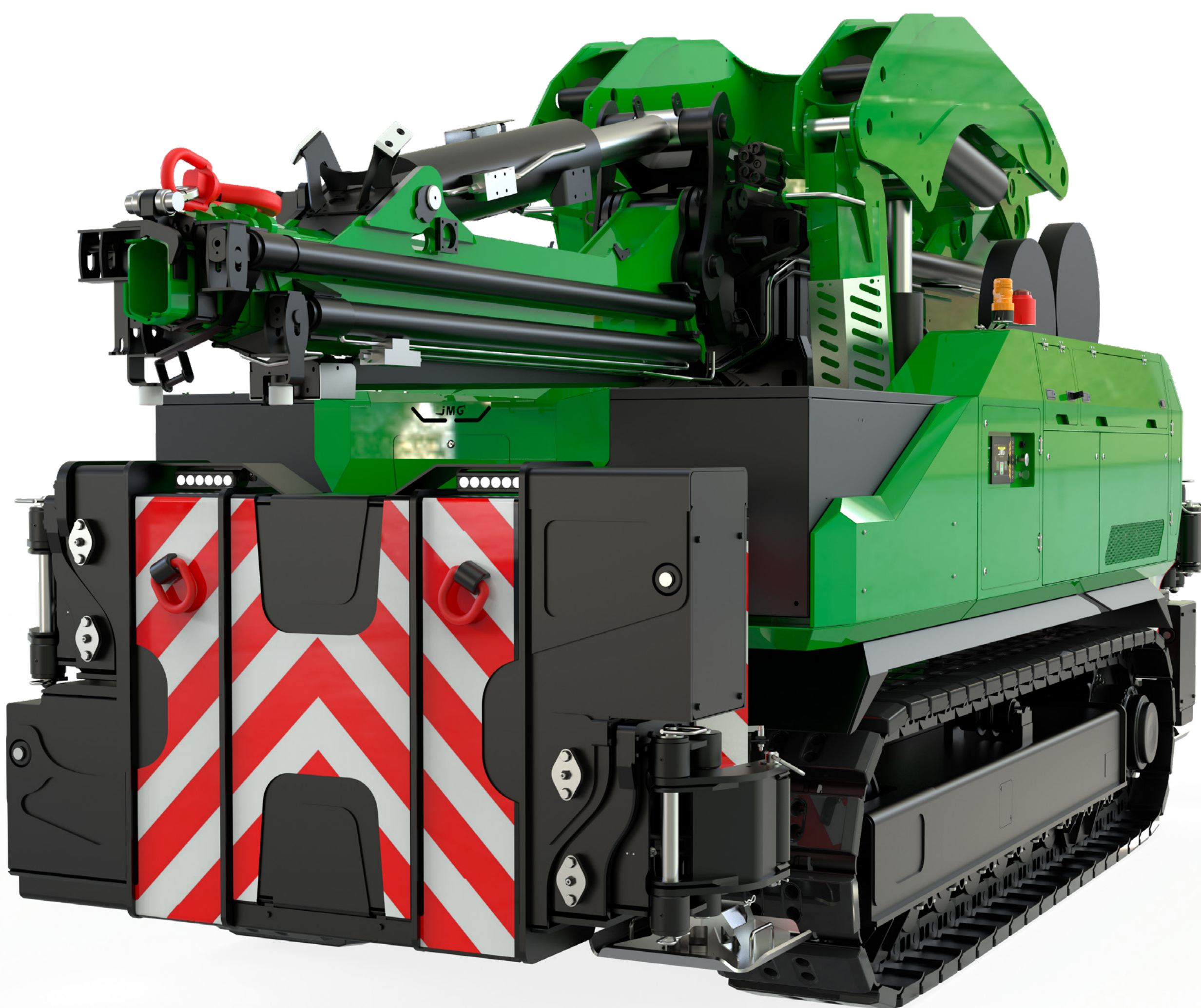


Portate con argano
 Tiro max diretto 2000 daN Max pull one line 2000 daN
 Massa bozzello e rinvii 100 kg Block and pulleys 100 kg
 (*) VIENE FORNITA UN'APPOSITA TESTATA PER IL TIRO IN 4° (OPZIONE)
 (*) A SPECIFIC PULLEY HEAD IS SUPPLIED WHEN LIFTING WITH 4 LINES (OPTION)



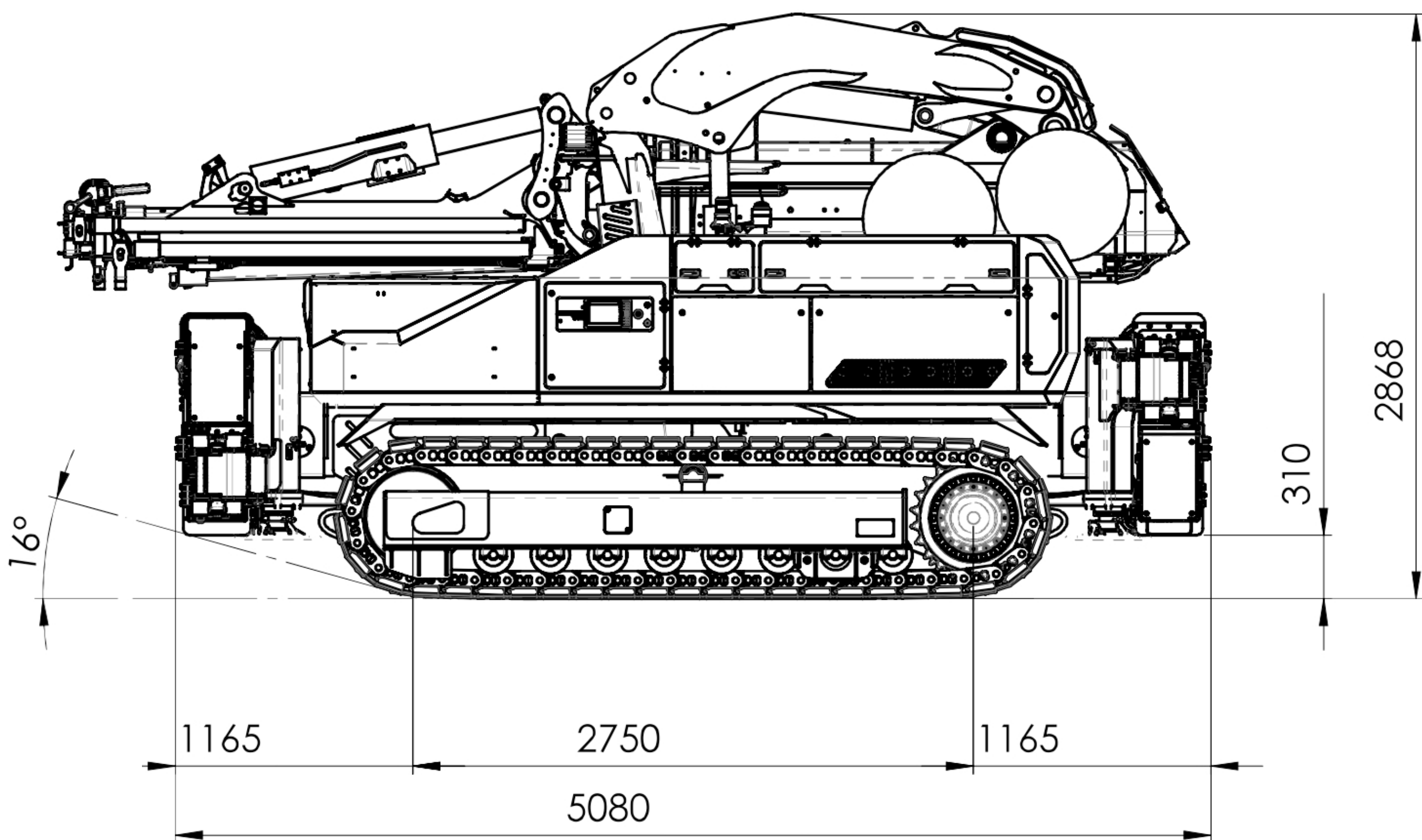
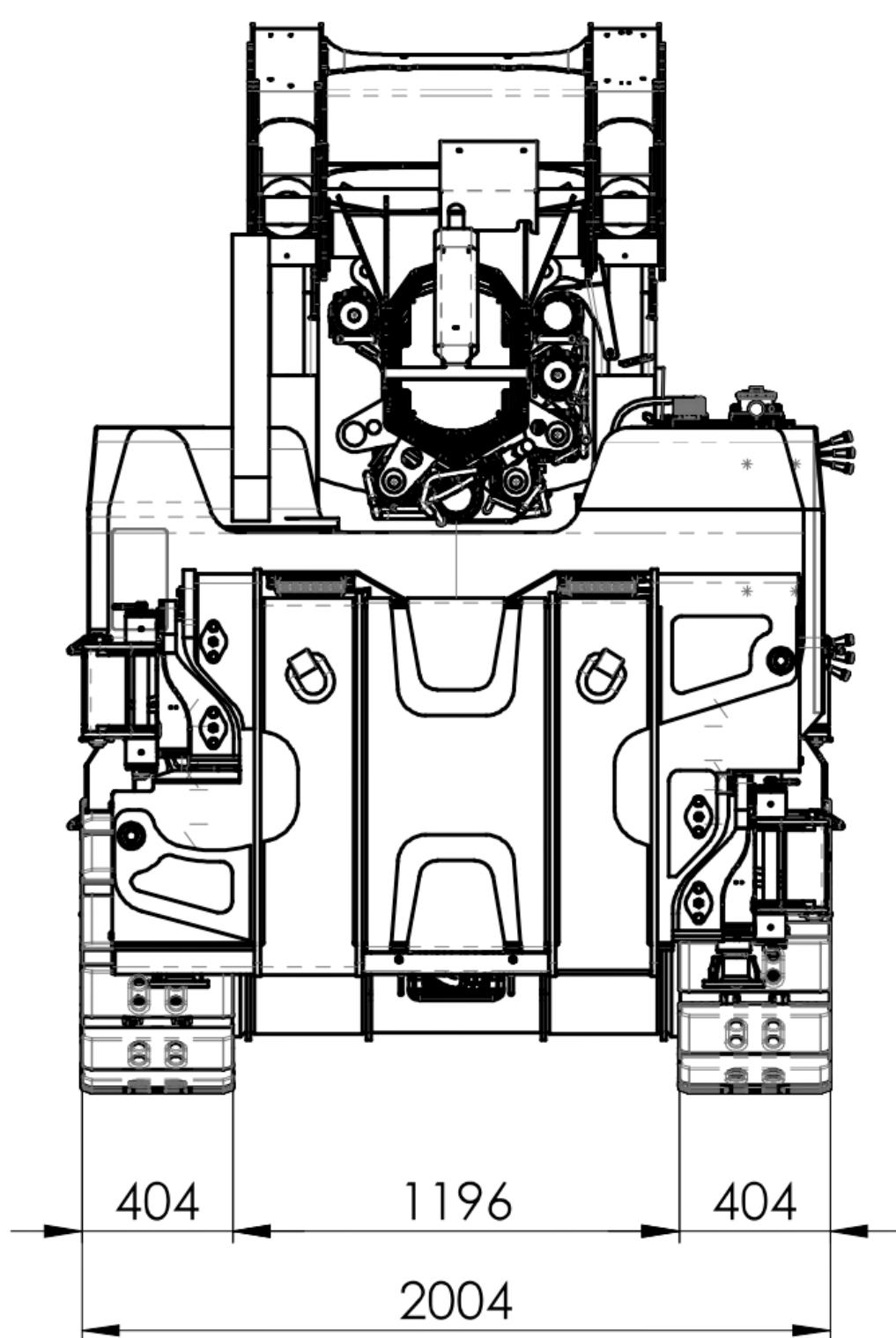
Dimensions.

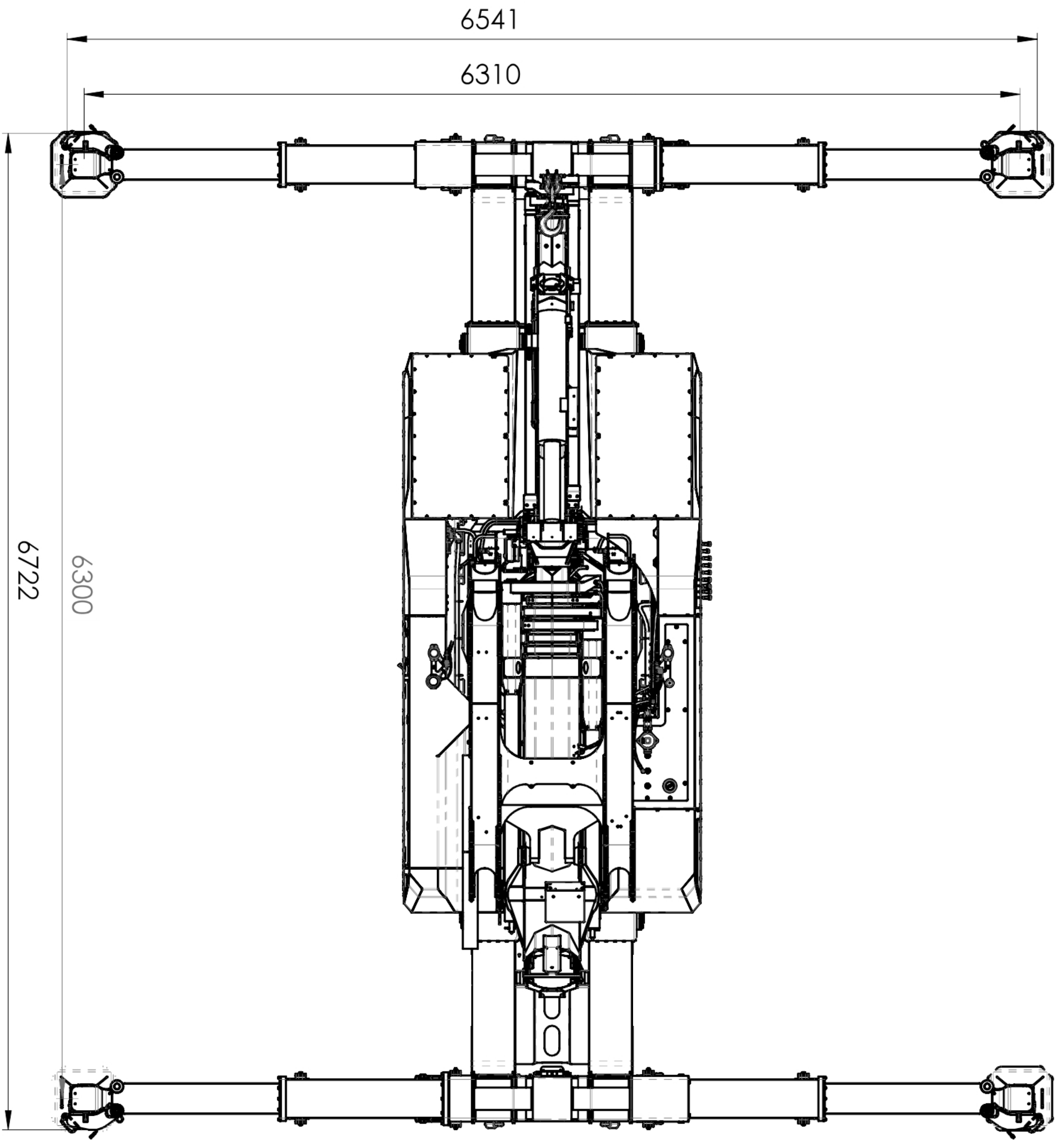
MC50000TE



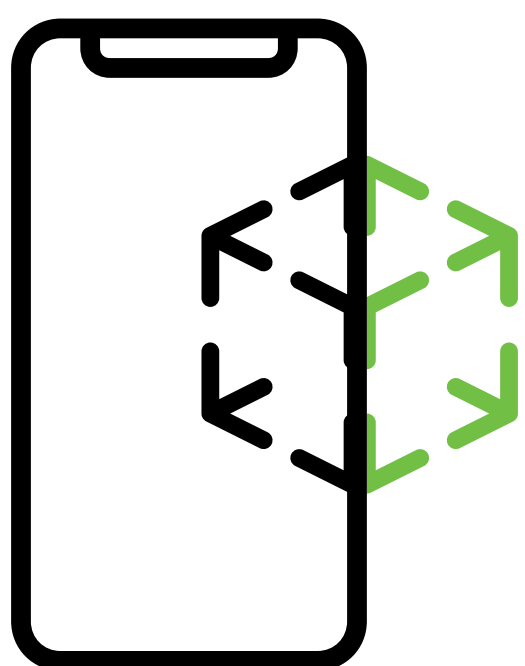
5080mm - 2004mm - 2868mm

MC50000TE





MC50000TE



Augmented reality.

Display the dimensions, accessories, and key features directly at the crane's point of use.

By pressing the button below, you can utilize augmented reality to position the **JMG MC50000TE** crane in space using the iPhone's native camera.

AR available only on iPhone.

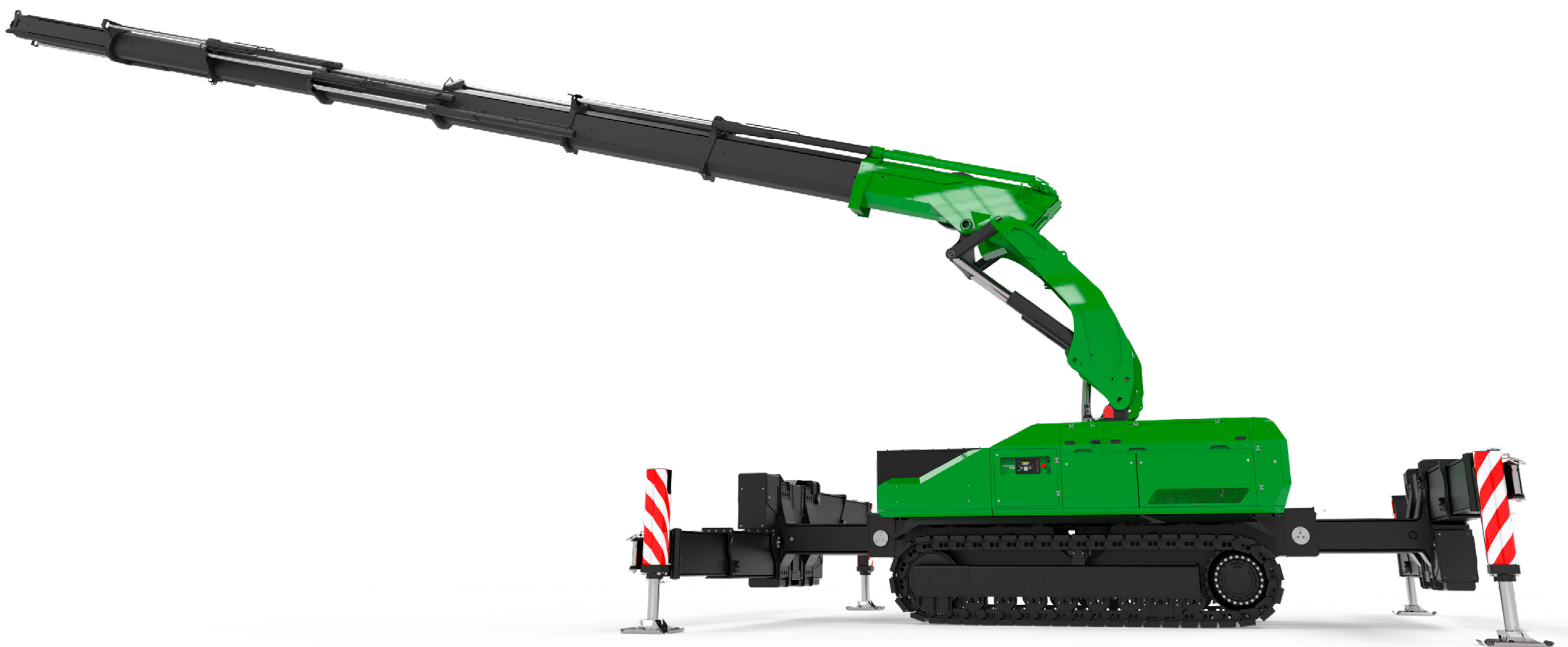
JMG[®]

MC50000TE



MC50000TE





JMG Cranes S.p.A

Business headquarters:

Via Bergamo 142
26100 Cremona (CR)
Italy

Production facility:

Via Zuccherificio 2
29010 Sarmato (PC)
Italy

+39 05238486

www.jmgcranes.com

info@jmgcranes.com